

[Click to view MFH-NORF01613](#)

Countryside house for sale in Manche - VIRTUAL TOUR

Saint-Pois , Manche , Normandy



€370,000

inc. of agency fees

5 Beds 3 Baths 185 sqm 3.4 ha

Equestrian property with beautiful detached house with numerous buildings and 8.5 acres The house has been completely renovated by...

At a Glance

Reference	MFH-NORF01613	Near to	Saint-Pois	Price	€370,000
Bed	5	Bath	3	Hab.Space	185 sqm
Land	3.4 ha	Pool	No	Land Tax	N/A

Property Description

Equestrian property with beautiful detached house with numerous buildings and 8.5 acres

The house has been completely renovated by the present owners. The front roof has been re-slatted, a new 4,000l all water septic tank has been fitted (2017), a new kitchen, conservatory and new bathrooms have been

fitted. The property has 5 bedrooms and is well insulated.

The property is in a quiet rural position with an enclosed, private garden. Every day facilities can be found at nearby Saint-Pois (4.7 km) or Juvigny-le-Têtre (7.3 km) with shops, schools, banks, etc. It is 14km from Mortain and 19km from the market town of Saint Hilaire du Harcouët. The property is situated in the north of France, 51 km from Saint-Lô, the department capital and 319km from Paris. It is within easy driving distance of the port at Saint Malo or Caen Ouistreham. The channel tunnel at Calais is 431 km. Direct trains to Paris can be located at Villedieu-les-Poêles 24km or Vire 23km. The UNESCO heritage site of the bay of Mont-Saint-Michel is about 51km. The coast at Granville is 49km distant.

here

THE ACCOMMODATION COMPRISES :

On the ground floor -

Conservatory 6.23 x 2.97m Tiled floor. Glazed door to east elevation and windows all round. Insulated roof. Sliding door to:

Boot Room

Lounge 6.15 x 4.02m Wood flooring. Window to front elevation and glazed door from conservatory. Fireplace with wood-burner.

Entrance Hall Partly glazed double doors to front elevation. Wood flooring. Stairs to first floor. Door to stairs to basement.

Kitchen/Dining Room 6.11 x 3.97m Window to front elevation and glazed door to conservatory. Wood flooring. Range of matching base and wall units. Central island unit. Stainless steel sinks with mixer tap. Built-in dishwasher. Cupboard housing electrics. Space for American style fridge/freezer. Induction hob with extractor hood over. Built-in oven and microwave oven. Worktops with tiled splashbacks. Floor to ceiling larder cupboard.

Cloakroom Window to conservatory. Macerator WC.

On the First Floor -

Landing Stairs to second floor. Laminate flooring.

Master Bedroom 4.05 x 3.66m Laminate flooring. Window to rear elevation. Radiator. Sliding door to:

Dressing Room 2.50 x 1.94m Fitted shelves and hanging space. Radiator.

En-Suite Shower Room 2.50 x 1.72m Large shower. Window to rear elevation. Vanity unit. Heated electric towel rail. Suspended WC.

Store Room Window to south elevation.

Shower Room 1.85 x 1.67m Window to rear elevation. Heated electric towel rail. Suspended WC. Vanity unit. Corner shower. Ventilation.

Bedroom 2 4.02 x 2.72m Window to north elevation. Electric radiator. Laminate flooring.

Bedroom 3 3.97x 3.40m Window to south elevation. Laminate flooring. Radiator.

On the Second Floor -

Landing Velux window to south elevation. Laminate flooring. Hatch to loft.

Bedroom 4 4.20 x 3.65m Eaves storage space. Velux window to south elevation. Radiator.

Shower Room 2.11 x 1.39m Vanity unit. Window to north elevation. WC. Corner shower with jets.

Bedroom 5 4.20 x 3.71m Eaves storage cupboard. Radiator. Sloping ceiling. Velux window to south elevation.

In the Basement -

Partly glazed double doors to west elevation. Utility area with space and plumbing for washing machine. Geothermal boiler. Part concrete and part earth floor. Insulated and good head height.

OUTSIDE :

Electric gates lead to a gravel drive and two 5 bar wooden gates to enclosed dog proof yard with areas of lawn with mature shrubs and flower borders.

Vegetable garden with raised beds. Greenhouse. Metal tool shed. Variety of soft fruit bushes including black currants, raspberries, black berries, goose berries, strawberries. Horse radish. Herb gardens.

Covered seating area with decking.

Block and stone built **Bread Oven** with slate roof 4.26 x 3.64m Power and light (used as summer kitchen). Attached wood store. Mower Store. Potting shed with electric.

Car Port with access to rear courtyard.

Double Garage 7.00 x 5.81m With 2 electric up and over doors. Concrete floor. Power and light. Attached **Workshop** 6.18 x 5.62m Concrete floor. Window and door to rear elevation. Power and light.

Cider press room and attached chicken coop and run.

3 paddocks and hay field. Stream. Second covered seating area. Ornamental pond. Orchard with variety of fruit trees including Bramley and cox apple, Melrose, Walnut, Cherry, Plum, Quince, Nectarines and pears. Shed.

Rear yard - fully fenced with independent access if required.

2 Storey **Old Cottage** 5.22 x 4.63m Constructed of stone under steel sectional roof. Water, electricity and drainage connected. Window and door to front and window to rear elevations. Stairs to first floor. Old bread oven.

Attached 2 Storey Barn 5.00 x 4.17m Corrugated iron. Metal double doors to front elevation.

Wooden Chalet used as tack room. Open fronted **tractor shed**.

Wooden stable block with 2 stables each 2.81 x 2.72m. Lean-to shelter to side.

ADDITIONAL INFORMATION :

Mains telephone, water and electricity are connected. Drainage to an all water septic tank. Central heating is provided by under floor heating and a reversible airsource exchange unit on the ground floor and groundsource heating to radiators on the first floor.

FINANCIAL DETAILS :

Taxes Foncières : 597€ per annum

Summary

Property type:	Countryside house
Bedrooms:	5
Bathrooms	3
Price	€370,000

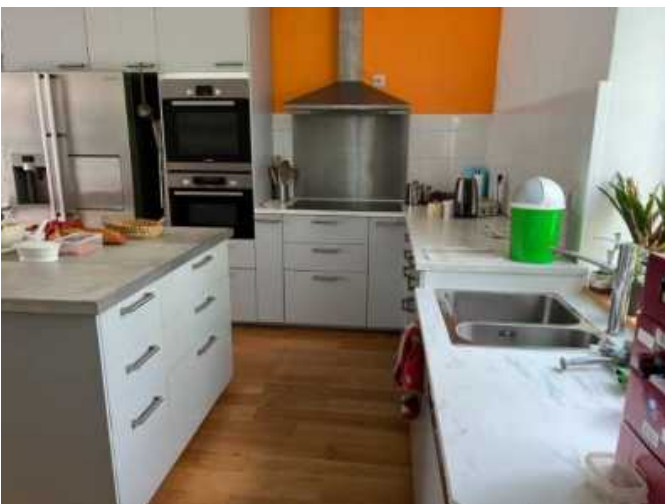
Key Information

Internal Area:	185 sqm
Land Area:	3.4 ha

Location: Normandy



Gallery



As Featured in

THE SUNDAY TIMES A Place in the Sun France The Sunday Telegraph THE GOOD property GUIDE Daily Mail YORKSHIRE POST FRENCH PROPERTY NEWS

Every property featured on our website is listed for sale at exactly the same price as it is in France, there's no premium for the superior service we offer.

We provide support based on our extensive experience and that of our bilingual experts to ensure that all aspects of your property purchase run smoothly.

Contact us on:

0845 123 5885 (UK only local rate) / **+44 (0) 113 216 4066**,
or email us at **bonjour@my-french-house.com**.

To see more great properties like this one, visit our daily updated website at **www.my-french-house.com**.

Buying French Property Just Got Easier...

The purchase process typically starts once you've visited a property with one of our agents and you made an offer on a property. Once your offer has been accepted, the property will come off the market and our local bilingual expert will liaise with you and the notaire. The compulsory searches are at the charge of the owner / vendor and are carried out at this stage.

You would have already been informed about the property taxes and legal fees (that incl. the stamp duty). The agency fees are already included in the listed price on this document, there's no premium for the superior service we offer. You don't have to pay the deposit until the 'pre-contract' has been signed, and the 10 days calling off period has expired. It takes an average of three months to buy a property in France.

For more information take a look at our **buying guide**, our **french mortgage** and **euro currency exchange** pages.

Testimonials

my-french-house was by far the best online guide I found – and I trawled them all – to buying a house in France. It answers all your first questions practically before you've thought to ask.

C. BAUER – Sunday Times

Our French property purchase and move to France were made so easy with the help and assistance of my-french-house.com. They are a committed and professional business – we highly recommend them.

S. and L. BROWN

great service
fast transfers

send money abroad 24/7 excellent rates